

SPECIFICATIONS

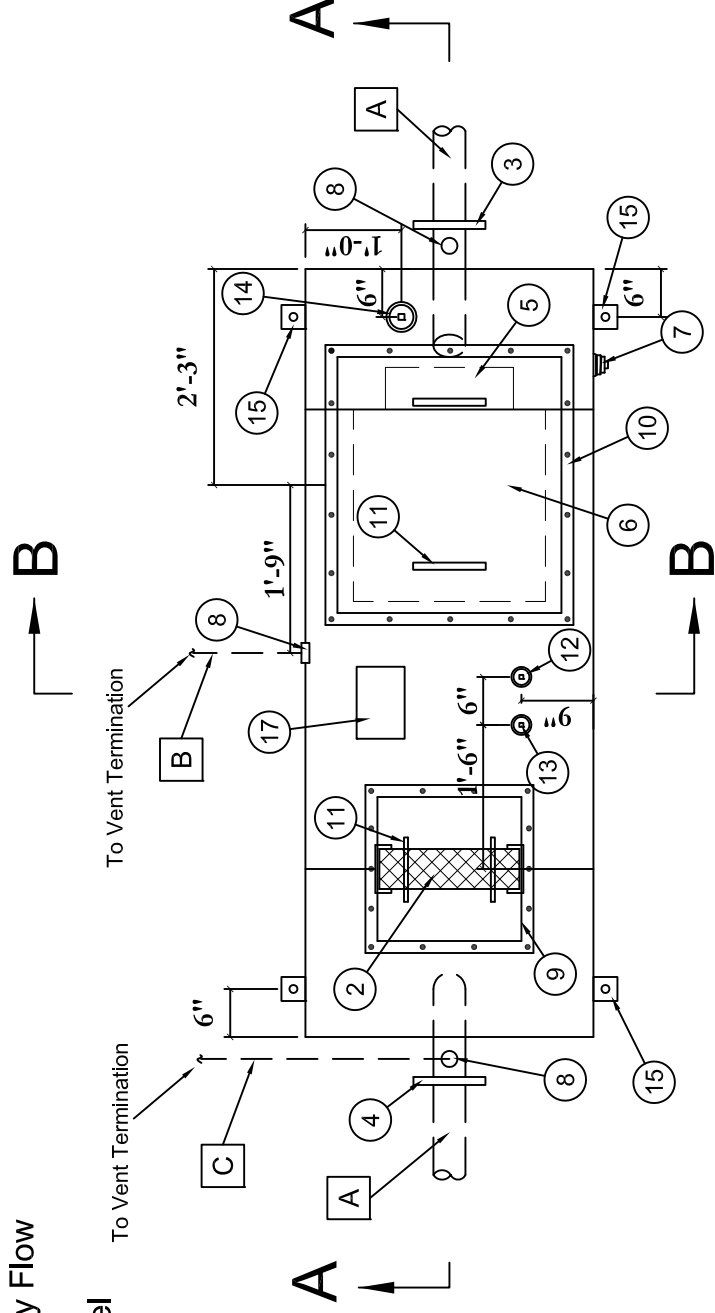
Model: PSRC-500
 Separator Volume: 540 Gallons
 Oil Storage: 150 Gallons Normal
 Flow Rate: 0 to 50 GPM Non-Emulsified Gravity Flow
 Performance: 10 ppm or Less Free Oil
 Construction: 7 Gauge ASTM A36 Carbon Steel
 Interior Coating: High Solids Epoxy (Blue)
 Exterior Coating: High Solids Epoxy (Blue)
 Separator Weight: 1,100 lbs

Vehicle Maintenance Wash Facility Oil-Water Separator

This drawing contains confidential information and must only be used for the installation, fabrication or promotion of PS International, Inc. products or services.

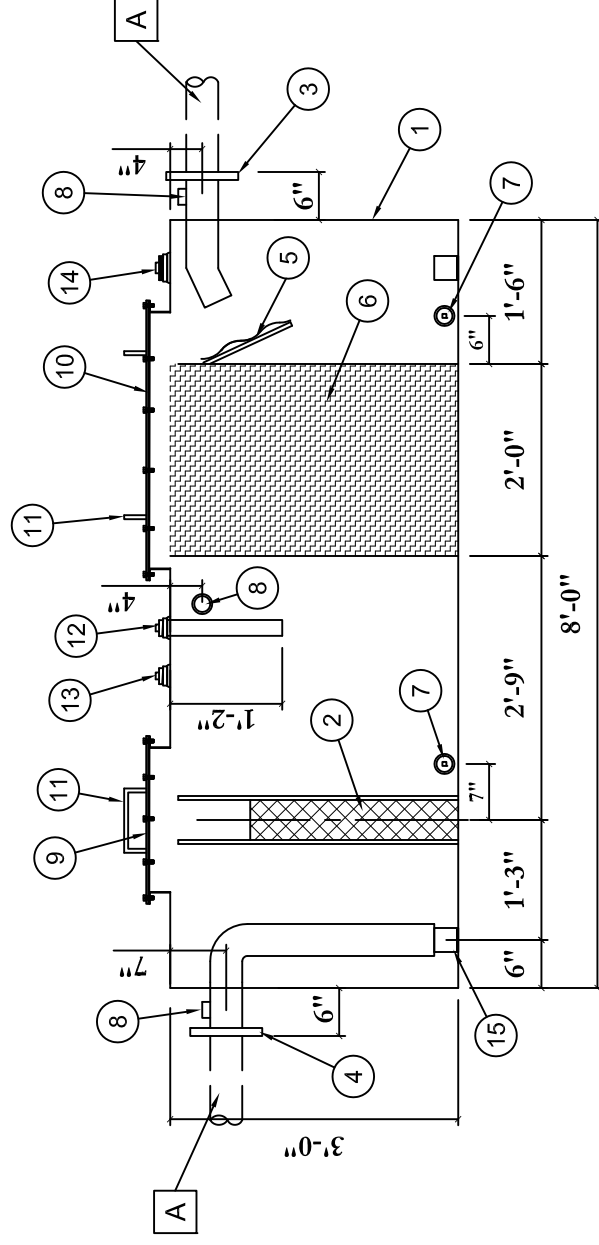
NOTES

1. Vents must be terminated per local codes and for safety requirements.
2. Separator must be filled with clean water prior to being put into service.
3. This separator is designed to remove free oils. Emulsions and/or dissolved hydrocarbons will not be removed by this equipment.



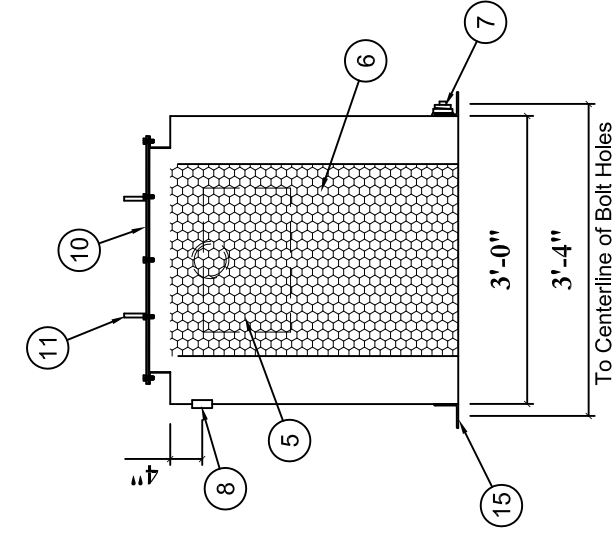
PLAN

SCALE: 1/2" = 1'-0"



SECTION A-A

SCALE: 1/2" = 1'-0"



SECTION B-B

SCALE: 1/2" = 1'-0"


PSI Furnished Equipment

1. 7 Gauge Carbon Steel Oil-Water Separator
2. Polypropylene Media Final Polishing Coalescer in Stainless Steel Frame
3. 4" 150 lb. Raised Faced Flanged Inlet
4. 4" 150 lb. Raised Faced Flanged Outlet
5. Corugated Plate Separator
6. PVC Corrugated Parallel Plate Pack Assembly
7. 2" NPT Half Coupling with Plug for Drain
8. 2" NPT Half-Coupling for Vent Connection
9. 32" X 28" Bolted Steel Access Cover
10. 18" X 18" Bolted Steel Access Cover
11. Lifting Handles on Cover
12. 2" NPT Full-Coupling with Plug for Oil Pump-out
13. 2" NPT Half-Coupling for Possible Future Sensor Installation
14. 4" NPT Half-Coupling with Plug for Quick Inspection/Gauging
15. Four (4) 4" x 4" x 1/4" Anchor Angles with 1" Hole
16. Four (4) Lifting Lugs -- One (1) On Each Top Corner (Not Shown)
17. Stainless Steel I.D. Plate

Equipment Furnished by Others

- A. 4" Inlet and Outlet Piping
- B. 2" Diameter Separator Vent Piping
- C. 2" Diameter Vent Piping (Siphon Break)
- D. Level Solid Foundation (Not Shown)

NUMBER	DATE	REVISIONS:	BY

PSI Quote No.	Project: Central Vehicle Wash Facility Schofield Barracks Oahu, HI
3060-1211	Sold To: Watts Constructors, LLC 737 Bishop Street Honolulu, HI 96813
PSI Sales Order No.	1202-1112
Customer PO No.	 PS International, Inc. 5309 East Ryan Place Sioux Falls, S.D. 57110 Ph.#: (605) 332-1885 Fax#: (605) 332-1293

Drawn:	Date:	Checked By:	Drawing No.
BJS	3-13-12	GWP	PSRC-500-12