

SPECIFICATIONS

MODEL: PSC-6000-LS-DW-J

Volume: 7,700 Gallons

Separator Volume: 6,000 Gallons

Sump Volume: 1,700 Gallons

Oil Storage: Up to 1,500 Gallons Recommended

4,000 Gallons Spill Capacity

Flow Rate: 0 to 900 gpm Non Emulsified Gravity Flow

Performance: 5 ppm or Less Free Oil in Effluent

Construction: 1/4" ASTM-A36 Carbon Steel Inner Wall with

UL-1746 Fiberglass Outer Wall and

Two (2) Steel Reinforcing Rings

Interior Coating: Tnemec Series 61 Epoxy

Exterior Coating: Fiberglass Per UL-1746,

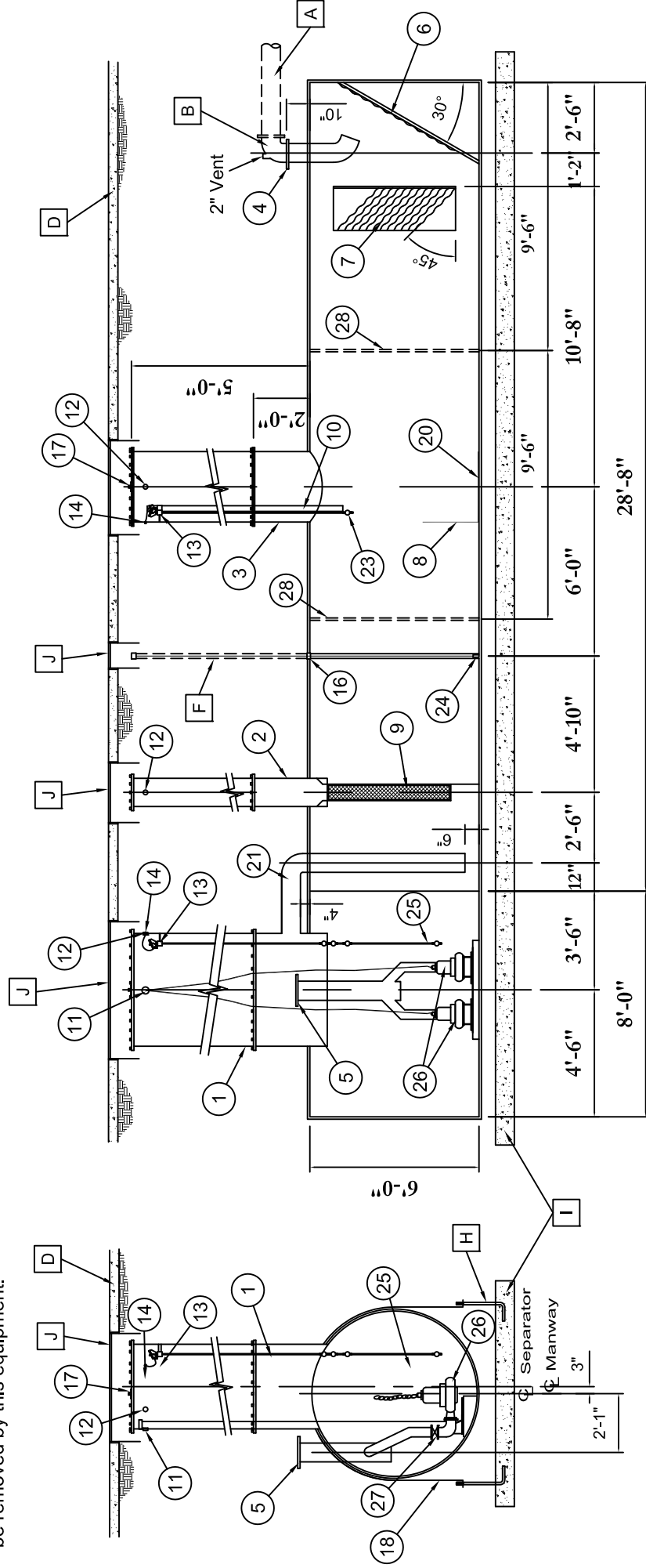
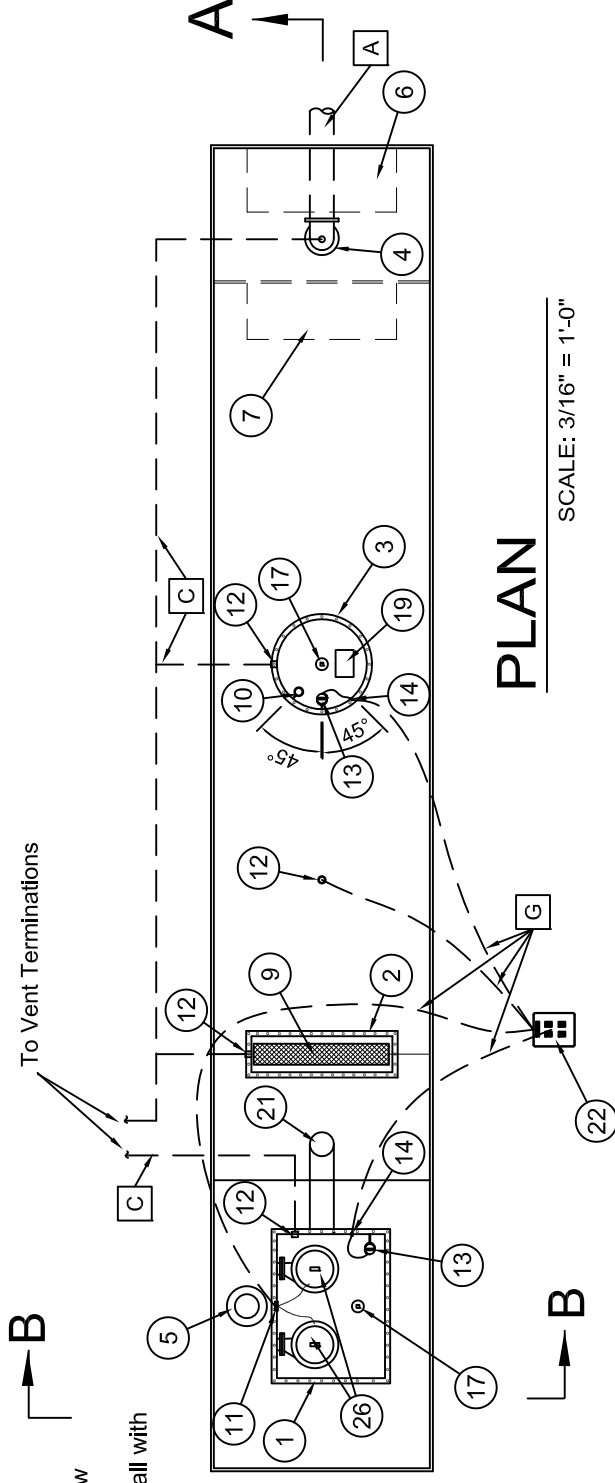
Includes 30 Year Warranty

Separator Weight: ~15,000 lbs.

NOTES

1. Vents must be terminated per local codes and for safety requirements.
2. Separator must be filled with clean water prior to being put into service.
3. This separator is designed to remove free oils. Emulsions and/or dissolved hydrocarbons will not be removed by this equipment.

This drawing contains confidential information and must only be used for the installation, fabrication or promotion of PS International, Inc. products or services.



PSI Furnished Equipment

1. 36" x 48" I.D. Access Manway for Lift Station (41" x 53" O.D. of Manway Flange)
2. 47" X 12" I.D. Rectangular Coalescer Access Manway (52" x 17" O.D. of Manway Flange)
3. 30" I.D. Separator Access Manway (35" O.D. of Manway Flange)
4. 8" 150 lb. Flat Faced Flanged Inlet
5. 8" 150 lb. Flat Faced Flanged Outlet
6. 10 Gauge Corrugated Parallel Plate Separator
7. 10 Gauge Corrugated Parallel Plate Separator
8. 24" High Sludge Baffle
9. Polypropylene Media Final Polishing Coalescer in Stainless Steel Frame
10. 2" NPT Full Coupling with Internal Oil Suction Pipe and Camlock Fitting
11. 3" NPT Full Coupling for Pump Conduit Connection
12. 2" NPT Half Coupling for Vent Connections
13. 2" Half-Coupling for Level Sensor Installation
14. 1/2" NPT Full Coupling For Sensor Conduit
15. Two (2) Lifting Lugs (Not Shown)
16. 2" NPT Half Coupling with Schedule 80 Interstitial Monitoring Pipe
17. 4" NPT Half-Coupling with Plug for Inspection and Gauging
18. Four (4) Epoxy Coated Steel Hold Down Straps
19. Stainless Steel Identification Plate
20. 1/4" Steel Striker Plate
21. 8" Compartment Crossover Pipe
22. NEMA 4X Control Panel A3P2
23. Single Level Stainless Steel Sensor for Separator Section with XP Junction Box
24. PSI Model PSLP-1 Leak Detection Probe with XP Junction Box
25. Four Level Stainless Steel Sensor for Lift Station Section with XP Junction Box
26. Two (2) ABS Model XP150ECB1.6 PE7/4 Submersible Effluent Pumps with 10 HP, 1760 RPM, 460/3/60 XP Motors @ 18" TDH Each. Pumps are Provided with Guide Rail System and SS Lifting Chain for Easy Pump Removal and Installation from Grade. Motor Includes 49' of Submersible Power Cable.
27. Two (2) 6" Wafer Check Valves
28. Two (2) Steel Reinforcing Rings

Equipment Furnished By Others

- A. 8" Inlet Piping
- B. 8" Short Radius Flanged Elbow with 2" Vent Connection
- C. 2" Diameter Vent Piping
- D. Concrete Pad at Grade
- E. 8" Outlet Piping (Not Shown)
- F. 2" Threaded Leak Riser Pipe with 2" Coupling
- G. Wiring and Conduit Between Sensors, Pumps, and Panel
- H. Eight (8) 1" Threaded Anchor Bolts
- I. Concrete Ballast Pad
- J. Manway Grade Boxes and Enclosures Suitable for Intended Traffic

NUMBER	DATE	REVISIONS:	BY

PSI Quote No. Project: Centurion Air Cargo, Taxiway K Ext.
Miami International Airport
MDAD Project #N094A

3005-0811 Sold To: Marks Brothers, Inc.
9455 N.W. 104th Street
Medley, FL 33178

PSI Sales Order No. 1111-1096

Customer PO No.



PS International, Inc.
5309 East Ryan Place
Sioux Falls, S.D. 57110
Ph.#: (605) 332-1885
Fax#: (605) 332-1293

Drawn: BJS	Date: 12-13-11	Checked By: GWP	Drawing No. PSC-6000-LS-DW-J-05
----------------------	--------------------------	---------------------------	---